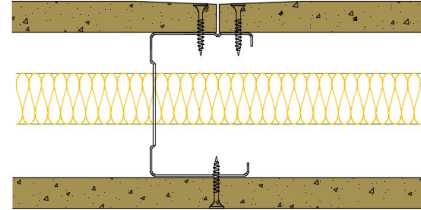


## AS70-S-163(25) - SPEEDLINE System Data Sheet - Version V1 (24-10-23)

SPEEDLINE 70mm Acoustic 'C' Stud Partition  
 @600mm Ctrs, with Siniat GTEC 15mm  
 Universal/Megadeco Board each side, 25mm APR



### System Performance Breakdown

Fire Resistance:

BS476 Part 22:1987:

Test Ref & Date or Applied Ref & Report:

Max Height:

Thickness:

Duty Grade: BS 5234: Part 2:1992:

Sound Insulation:

**60/60 Minutes** (Integrity/Insulation).

**BTC 17444F - BRE Report P102396-1011C**

**Refer to Speedline Specification Clause**

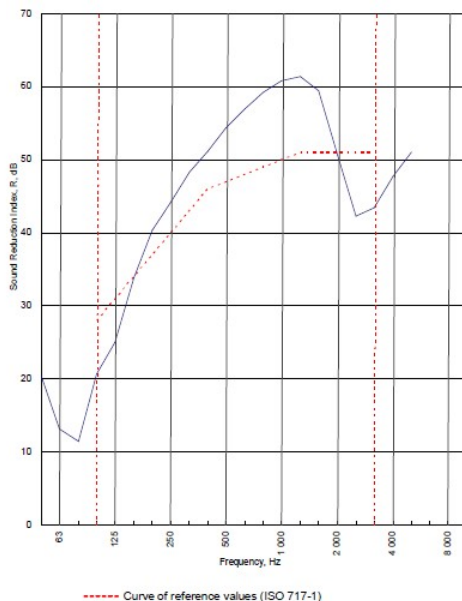
**102 mm.** (At Base Track, Excluding Finishes)

**Severe - Annexes A-F**

**47  $R_w$ dB**, Date Tested or Assessed Against - 09/08/2011

Test Code:  
**H17521AA**  
 Test Date:  
**09/08/2011**

Freq. Hz	R dB
50	20.5
63	13.2
80	11.4
100	20.7
125	25.0
160	33.8
200	40.3
250	44.1
315	48.3
400	51.1
500	54.3
630	56.9
800	59.2
1 000	60.8
1 250	61.4
1 600	59.5
2 000	50.6
2 500	42.3
3 150	43.4
4 000	47.8
5 000	51.0
6 300	
8 000	
10 000	



Rating according to BS EN ISO 717-1:1997  
 **$R_w$  (C;Ctr) = 47 (-3;-8) dB**  
 Max dev. 8.7 dB at 2 500 Hz

$C_{50-150}$ = -6 dB	$C_{50-500}$ = -6 dB	$C_{100-500}$ = -2 dB
$C_{1,50-3,150}$ = -17 dB	$C_{1,50-4,000}$ = -17 dB	$C_{1,100-4,000}$ = -8 dB

Evaluation based on laboratory measurement results obtained by an engineering method.

TESTED AT ONE OF THE UKAS ACCREDITED LABORATORIES BELOW

B.T.C (H-Ref on Graph)	
B.R.E	
AIRO	
S.R.L	

Customer: Metsec plc Hepsec Division



BTC 17521A: Page 9 of 11

SPEEDLINE Drywall Systems, Adsetts House, 16 Europa View, Sheffield Business Park, Sheffield, S9 1XH.

Tel: 0114 231 8030.

Email: [enquiries@speedlinedrywall.co.uk](mailto:enquiries@speedlinedrywall.co.uk)

(As per the requirements set out in ISO/IEC 17025:2017 regarding test data the results stated have been carried out by voestalpine Metsec plc as part of the contract to supply Speedline Metal Sections to SIG Plc)